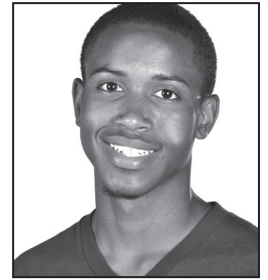


2012-13

Middle and High School Application for Magnet Schools, Magnet Programs, Optional Programs, and High School Open Enrollment



How to Apply

1. Choose a school.

Students may apply to the school that serves their address, to magnet schools, and to even more schools by applying to their magnet or optional programs. Descriptions of schools and programs are available throughout this guidebook. To find out which school serves your child's home address, call the JCPS Demographics Office at **(502) 485-3050** or use the online SchoolFinder at <http://apps.jefferson.kyschools.us/demographics/schoolfinder.aspx>.

2. Fill out this application.

- The form lets you list a first- and a second-choice program/school. Don't select more than two.
- Don't list a traditional magnet school, the Brown School, or a middle school Mathematics/Science/Technology (MST) Program as a second choice. Applications for these schools and the MST Program are randomly selected for available openings. Students are included in the random-draw list only if the program or school is listed as the first choice.
- Be sure to fill in all the requested information on the form. Blank spaces may slow the acceptance process. Don't use post office (P.O.) box numbers for your child's address.
- Elementary and middle school students who are already enrolled in a traditional magnet school or program don't need to fill out an application for a traditional magnet middle or high school if their traditional school is a feeder school to the next level. (See page 7 for information on elementary schools offering traditional education. See page 30 for information on traditional middle schools and page 55 for information on traditional high schools.)

3. Submit your application.

The JCPS Optional, Magnet, and Advance Programs Office must receive your application by 5 p.m. on **Fri., Jan. 6, 2012**.

Mail your application—if you're sure it will arrive in time to meet the deadline—to the following address:

Optional, Magnet, and Advance Programs Office
Jefferson County Public Schools
P.O. Box 34020
Louisville, KY 40232-4020

Or take your application to:

JCPS Optional, Magnet, and Advance Programs Office
Lam Building, Room 104
4309 Bishop Lane

(The Lam Building is located behind the VanHoose Education Center.)

Confirmation and Acceptance

- After you submit the application, you should receive a postcard confirming that JCPS is processing it. If you don't get the postcard within three weeks, call the JCPS Optional, Magnet, and Advance Programs Office at **(502) 485-3323**.
- After the office processes your application, some schools ask for additional information, such as a student work sample or test score, a copy of a report card or progress report, and a checklist completed by a teacher or child-care provider. If a school asks you for additional information, please reply promptly and send the information directly to the school. Don't send any additional information to the Optional, Magnet, and Advance Programs Office.
- Students will be assigned to a school for the next school year before the end of the current school year.

Please note:

- Submitting an application doesn't guarantee placement in a school or program.
- Schools don't keep waiting lists.
- Don't submit more than one application. If you do, the second one will cancel the first, which could jeopardize acceptance into a school or program.
- Submitting false information will void an application.

Need more information on the application process?

Call the Optional, Magnet, and Advance Programs Office at **(502) 485-3323**.

Applicants whose parents are moving into Jefferson County from another county or another state may apply but must provide proof of residence in Jefferson County before enrollment. Applicants who are not residents of Jefferson County will not be considered for school placement until all Jefferson County applicants have been considered.

Application Codes

Use the six-digit codes below on the attached Application Form to identify the school(s) and program(s) for which you are applying.

Middle Schools

Brown

- Self-Directed Learning: 165MGA

Crosby

- Liberal Arts Academy: 119OPA

Highland

- Fine Arts: 320OPA
- International Studies: 320MGA

Jefferson, Thomas

- Communications: 090MGA

Lassiter

- Environmental Education: 133OPA

Mathematics/Science/Technology (MST) Programs

- Farnsley, Meyzeek, and Newburg: MSTXXX

Moore Traditional

- Environmental and Life Science: 155OPA

Noe

- Gifted and Talented: 435MGA
- Visual and Performing Arts: 435MGB

Olmsted Academy North

- All-Boys School: 620MGA

Olmsted Academy South

- All-Girls School: 730MGA

Stuart

- Health Careers: 144OPA

Traditional Magnet Schools

- Barret, Jefferson County, and Johnson: MMMXXX

Western Middle

- Visual and Performing Arts: 710MGA

Westport

- Montessori: 077MGA

High Schools

Network 1

Doss

- Business and Finance: 100TEC
- Information Technology: 100TEB

Fairdale

- Human Services (Law/Government Service, Fire, Police, EMS): 057MGA
- Education: 057TEM
- International Studies: 057TEC
- Heavy Equipment Science: 057MGB

Iroquois

- Engineering: 335TEX
- Architecture: 335TEC
- Construction: 335MGA
- Navy JROTC: 335TPR

Pleasure Ridge Park

- Communications: 075TEB
- Electronic and Print Media: 075TEA
- Visual and Performing Arts: 075TEC

Valley

- Medical Arts and Sciences: 033TEB
- Allied Health: 033TEC
- Environmental Science: 033TEA
- Navy JROTC: 033TPR

Western

- Early College: 084MGC
- Culinary Arts: 084MGB

Network 2

Fern Creek

- Communications: 012TED
- Electronic and Print Media: 012TEB
- Visual and Performing Arts: 012TEC
- Marine Corps JROTC: 012TPR

Jeffersontown

- Engineering: 065TEX
- Manufacturing: 065TEA
- Construction: 065TEC
- Marine Corps JROTC: 065TPR

Moore

- Medical Arts and Sciences: 155TEB
- Health: 155TEC
- Environmental Science: 155TED
- Air Force JROTC: 155TPR

Seneca

- Human Services (Law/Government Services): 073TEC
- Education: 073TEM
- Liberal and International Studies: 073TEB
- Urban Agriscience Technology: 073MGA
- Marine Corps JROTC: 073TPR

Southern

- Business and Finance: 031TEC
- Information Technology: 031TED
- Transportation Technology: 031MGA
- Machine Tool and Die Technology: 031MGB
- Army JROTC: 031TPR

Network 3

Academy @ Shawnee

- Engineering: 590TEX
- Aerospace: Flight School: 590MGA
- Aerospace: Aviation Maintenance Technology: 590MGB
- Navy JROTC: 590TPR

Atherton

- Human Services (Law/Government Service): 018TEA
- Education: 018TEM
- International Studies/International Baccalaureate: 018MGA

Ballard

- Communications: 105TEA
- Electronic and Print Media: 105TEB
- Visual and Performing Arts: 105TEC

Eastern

- Business and Finance: 007TEA
- Information Technology: 007TEB
- Army JROTC: 007TPR

Waggener

- Medical Arts and Sciences: 051TEE
- Health: 051TEF
- Environmental Science: 051TEG

Districtwide Magnet Schools

Academy @ Shawnee

- Aerospace: Flight School: 590MGA
- Aerospace: Aviation Maintenance Technology: 590MGB

Brown

- Self-Directed Learning: 165MGA

Central High School Magnet Career Academy (MCA)

- Banking, Finance, Business Management, Entrepreneurship: 179MGB
- Computer Technology: 179MGA
- Dental/Pharmacy/PreMed/Nursing: 179MGD
- Legal/Governmental Services (Law): 179MGC
- Veterinary Science: 179MGE

DuPont Manual High

- Communications/Media Arts: 200MGC
- High School/University: 200MGA
- Mathematics/Science/Technology: 200MGD
- Visual Arts Program: 200MGB

Western

- Early College: 084MGC
- Culinary Arts: 084MGB

Youth Performing Arts School

- Band: Wind and Percussion Instruments: 940MGE
- Dance: 940MGB
- Design and Production (Technical Theatre): 940MGD
- Musical Theatre: 940MGH
- Orchestra: Stringed Instruments: 940MGG
- Piano: 940MGF
- Theatre (Drama/Acting): 940MGA
- Vocal Music: 940MGC

Open Enrollment

(See page 50.)

Network 1

- Doss: 100OEX
- Fairdale: 057OEX
- Iroquois: 335OEX
- Pleasure Ridge Park: 075OEX
- Valley: 033OEX
- Western: 084OEX

Network 2

- Fern Creek: 012OEX
- Jeffersontown: 065OEX
- Moore: 155OEX
- Seneca: 073OEX
- Southern: 031OEX

Network 3

- Academy @ Shawnee: 590OEX
- Atherton: 018OEX
- Ballard: 105OEX
- Eastern: 007OEX
- Waggener: 051OEX

Traditional Program Magnets

- Butler Traditional High: 045STX
- Louisville Male High: 047STX

When your application is received,
a confirmation postcard is mailed.
If you have not received this card
within three weeks of submitting your
application, please call 485-3323.

2012-13 Application

Magnet Schools, Magnet Programs, Optional Programs, and High School Open Enrollment

Middle and High School: Grades Six Through Twelve

Student's Full Name: _____

Please print.

First

Middle

Last

Date of Birth: _____ Sex: Male Female

Current School: _____

Is the student new to Jefferson County? Yes No

Check the level/grade the student will be in **NEXT** school year:

Grade Six Grade Seven Grade Eight
 Grade Nine Grade Ten Grade Eleven Grade Twelve

Is the student Hispanic/Latino? Yes No

Is the student from one or more of these races? (Check all that apply.)

American Indian/Alaska Native Asian Black or African American
 Native Hawaiian or Other Pacific Islander White

Information on race will not be used in the assignment of an individual student.

Father's Birth Country: _____

Mother's Birth Country: _____

Child's Birth Country: _____

Address: _____

Post office box numbers/addresses cannot be processed.

Number

Street

City

State

ZIP

Parent's/Guardian's Telephone No.: _____

Work: (_____) _____ Home: (_____) _____

Enter six-digit application codes here:

FIRST CHOICE: _____

SECOND CHOICE:* _____

*A student will be included in the random-draw list for a traditional magnet school, the Brown School, or a middle school Mathematics/Science/Technology (MST) Program **only** if the program or school is indicated as the student's **first** choice and the application is submitted by the deadline.

Parents of siblings who share the same birth date (twins, triplets, etc.) who are applying to a traditional magnet school or the Brown School must submit a separate application for each child, but these applications will be treated as one application.

Traditional magnet schools and the Brown School give no priority to the siblings of students previously enrolled.

Is the applicant a twin, triplet, etc.? Yes No

If yes, give name(s): _____

Is the applicant's twin/triplet, etc., applying to the same school? Yes No

Optional, Magnet, and Advance Programs Office
485-3323

When your application is received, a confirmation postcard is mailed. If you have not received this card within three weeks of submitting your application, please call 485-3323.

Parent's/Guardian's Signature: _____ Date: _____

Parent's/Guardian's Name: (Please print.) _____

It is the parent's/guardian's responsibility to mail the application to: Jefferson County Public Schools, Optional, Magnet, and Advance Programs Office, P.O. Box 34020, Louisville, KY 40232-4020, or to bring the application in person to the JCPS Optional, Magnet, and Advance Programs Office at 4309 Bishop Lane, Room 104 (behind the VanHoose Education Center).